

“The Swanson School of Engineering is committed to supporting an environment of academic integrity, equal opportunity, and diversity.”

**Gerald D. Holder, PhD**  
U.S. Steel Dean of Engineering  
University of Pittsburgh



“International experience is now an integral part of engineering education, and highly sought after by employers across all engineering disciplines. GEPS will allow us to provide that experience to students who otherwise might not have the opportunity.”

**Kent A. Harries, PhD, FACI, FIIFC, P.Eng.**  
Department of Civil and Environmental Engineering  
University of Pittsburgh

## HOW TO APPLY

### High School Students/Prospective First-Year Students

[engineering.pitt.edu/geps/firstyear](http://engineering.pitt.edu/geps/firstyear)

### Transfer Students

[engineering.pitt.edu/geps/transfer](http://engineering.pitt.edu/geps/transfer)

### For more information contact

University of Pittsburgh  
Swanson School of Engineering  
Engineering Office of Diversity  
127 Benedum Hall  
3700 O'Hara Street  
Pittsburgh PA 15261

[eodadmin@pitt.edu](mailto:eodadmin@pitt.edu)  
412-624-9842



### Sylvanus N. Wosu, PhD

Associate Dean for Diversity Affairs and  
Professor of Mechanical Engineering and Materials Science  
Director, NSF S-STEM GEPS

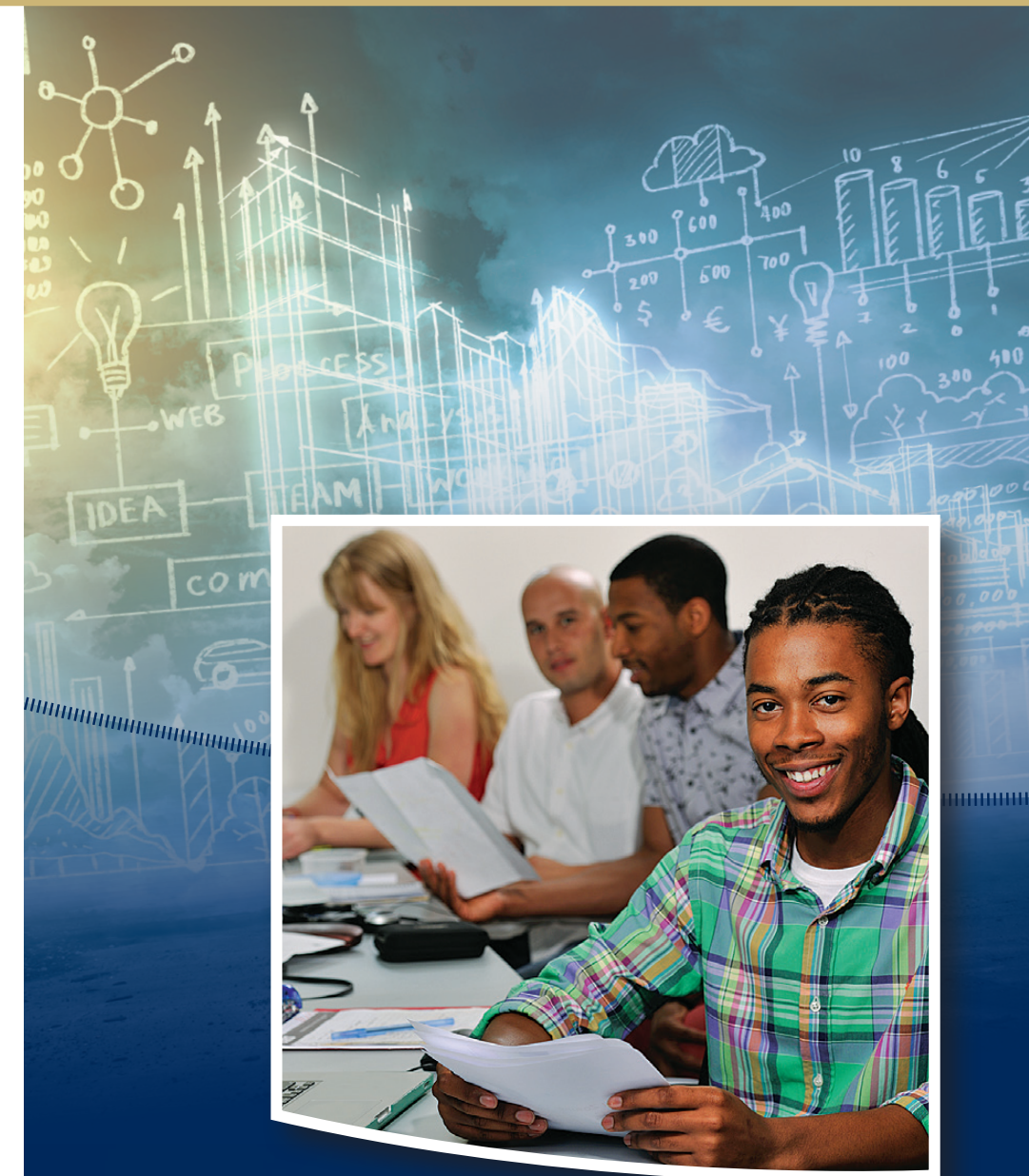
### Mark L. Kimber, PhD

Assistant Professor of Mechanical Engineering and Materials Science  
Co-Director, NSF S-STEM GEPS

### Kent A. Harries, PhD, FACI, FIIFC, P.Eng.

Associate Professor of Structural Engineering and Mechanics  
Department of Civil and Environmental Engineering  
Chair, GEPS Advisory Board

The information printed in this document was accurate to the best of our knowledge at the time of printing and is subject to change at any time at the University's sole discretion.  
The University of Pittsburgh is an affirmative action, equal opportunity institution. 09/14



## Global Engineering Preparedness Scholarship (GEPS) Program

*Educating Engineers in Cultural and Societal Contexts*



## ABOUT GEPS

Thanks to a grant from the National Science Foundation, the University of Pittsburgh Swanson School of Engineering and its Office of Diversity (EOD) have established the Global Engineering Preparedness Scholarship program (GEPS).

GEPS helps to support the recruitment, retention and graduation of low-income students from underrepresented minorities and majority populations. GEPS also prepares students for the global marketplace by offering international opportunities that students would not normally be able to participate without additional supporting funds.

Because the engineering career of the 21st century is more globally competitive than ever, GEPS also provides an integrative framework that focuses on access, continuous academic support, development of global competency and leadership experience. International experience is now an integral part of engineering education, and highly sought after by employers across all engineering disciplines. GEPS Scholars will have access to Pitt's exceptional education abroad programs to experience international skills sought by the engineering profession.

The Swanson School of Engineering is ranked among the top 25 public university engineering programs by *US News and World Report*, while the University of Pittsburgh was named a "Best Value College" by *The Princeton Review* and *USA TODAY* for the fourth consecutive year; and Best Value In Public Higher Education in Pennsylvania by *Kiplinger's* for the ninth consecutive year (2014).

## GEPS BENEFITS

- **Summer Engineering Academy (SEA):** A rigorous two-week pre-college program designed to assist students in making a smooth transition from high school to college.
- **Academic Counseling and Advising:** Structured one-on-one academic counseling and advising for all first-year students. Students will meet with an Academic Counselor regularly, as well as with the Associate Dean for Diversity at the beginning of each semester to set goals and at the end of each semester to review goal attainment.
- **Academic Living/Learning Community (ALC):** All GEPS Scholars participate in ALC program activities in the first year at Pitt. This provides Scholars the opportunity to live and learn from each other and develop and cultivate cross-cultural lifelong friendships.

- **Academic Tutoring:** Tutoring support will be provided for all GEPS Scholars in physics, chemistry and math courses through the EXCEL office.
- **Faculty Mentoring:** Students will be matched with faculty who will engage in a professional one-on-one relationship to further challenge students in scholarly activities.
- **Peer Mentoring:** GEPS will provide a more structured and effective peer mentoring program by pairing GEPS first-year students with Engineering Ambassadors selected from a group of outstanding engineering juniors and seniors. The Engineering Ambassadors will help students develop good study skills, capacity building skills, and communication skills critical during the first year at the Swanson School.
- **Global Leadership Competency Development for Engineers (GLE):** After the first year, Scholars will participate in GLE activities designed to enrich global leadership experience and global preparedness. GLE activities are supported through partnerships with employers, international study abroad, and career development programs, allowing Scholars to engage in engineering design and problem solving in cultural and societal contexts, both at home and abroad.

## SCHOLARSHIP ELIGIBILITY, SELECTION, AND RETENTION

GEPS Scholars will be selected from the pool of admitted students or transferring students meeting US citizenship or permanent residency requirements and having unmet financial needs as determined through the Office of Admissions and Financial Aid. Student should be in to top 10-20 percent of class high school ranking, ACT/SAT above 27/1300, or college transfer GPA of 3.0 or above.

Beyond scores and academic performance, students are offered GEPS admission by committee review of GPA, SAT/ACT scores, strength of high school courses, class ranking, teacher recommendations for overall potential for success, extracurricular activities, honors and awards, professionalism, leadership, and personal statement.

**All GEPS Scholars must maintain a cumulative GPA of 3.0 to retain the Scholarship.** All GEPS Scholars who complete the second year of the program with GPA of 3.0 and above are eligible for the GEPS International Study Abroad Scholarship.

