



PITT OHIO

SUPPLY CHAIN • GROUND • LTL • TL

YOUR TRANSPORTATION SOLUTIONS PROVIDER

DC Current, Micro Grids as a Key Component of Sustainability

The Company and its culture

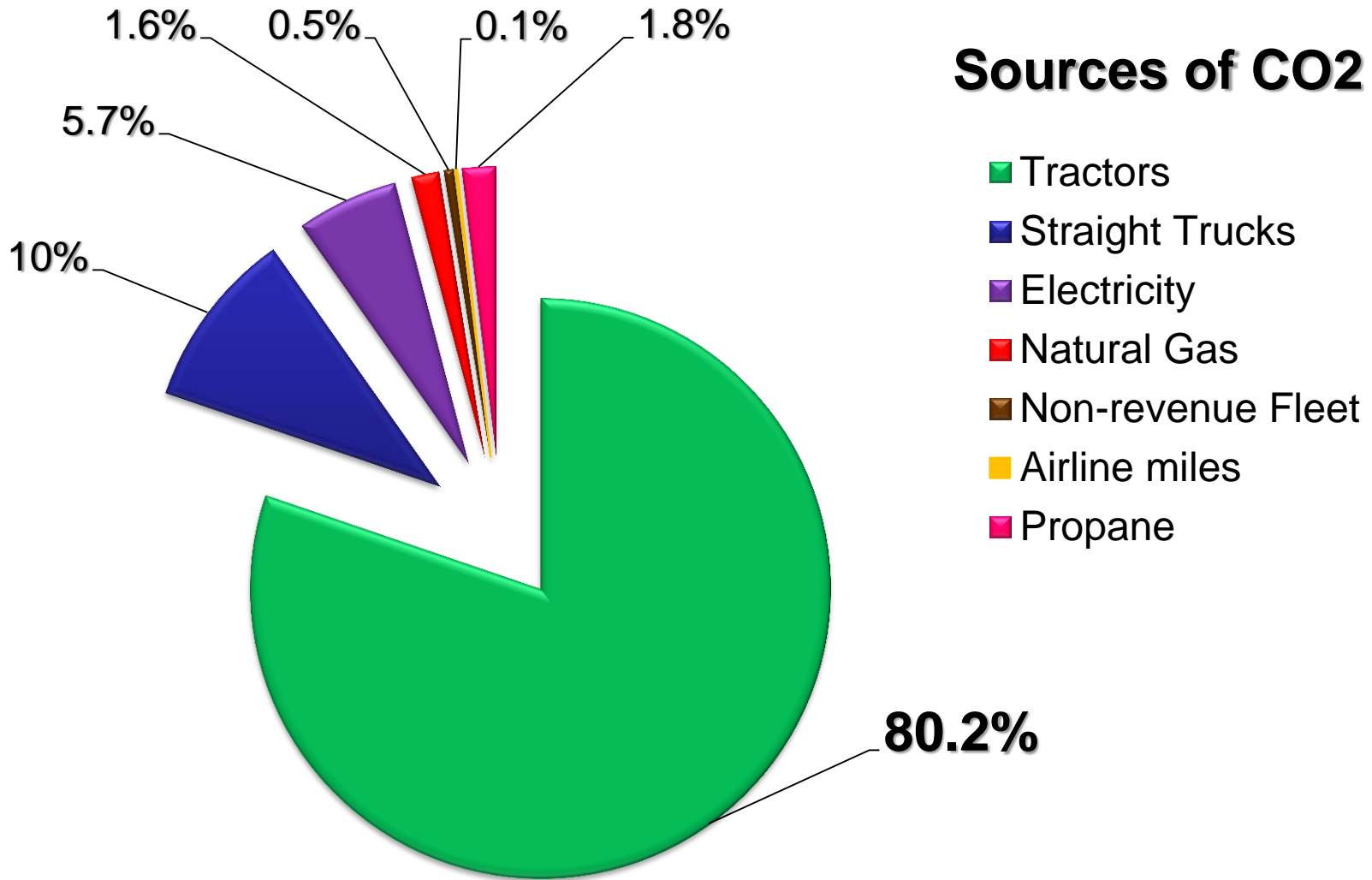
- Family Owned
- Trucking and Logistics
- Philanthropic
- Employee Focused

Why are we focused on Sustainability?

- It is the right thing to do
- Save money
- Gain a competitive advantage
- Certain customers want to do business with like-minded businesses

Carbon Output

Sources of CO2



Trucking

- Fewer miles – 80 million/year- optimize
- Fuels – additives, alternative fuels
- Equipment mix, size and cubic capacity, weight, engines, emissions
- SSI (Speed, Shifting, Idle time)
- Aerodynamics – skirting
- Substitute services – water, rail

Sustainability – Next Steps

Diversify the Fleet



Put the right size shipment on the
right size truck.



PITTOHIO

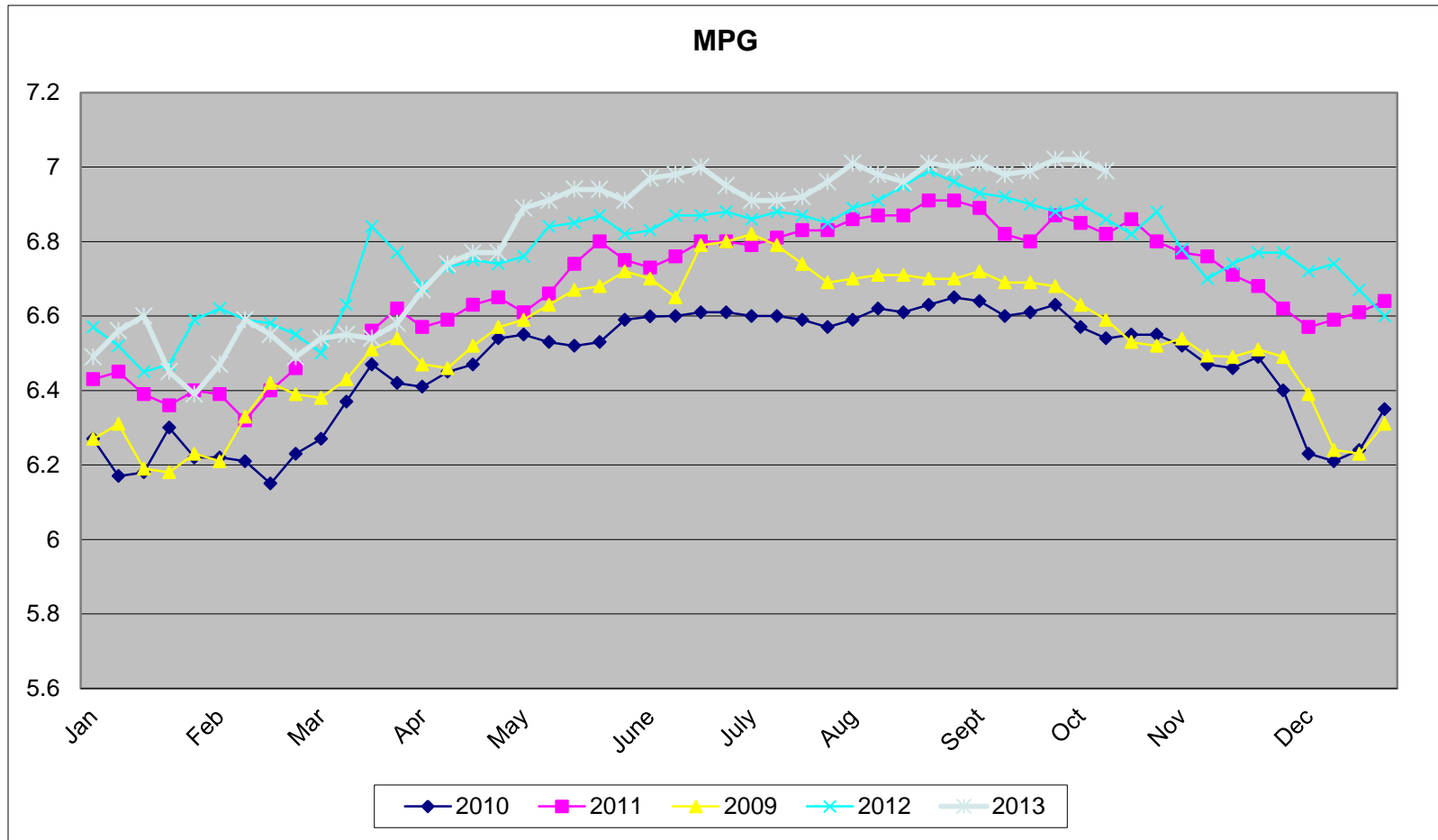
SUPPLY CHAIN • GROUND • LTL • TL



1-800-366-7488

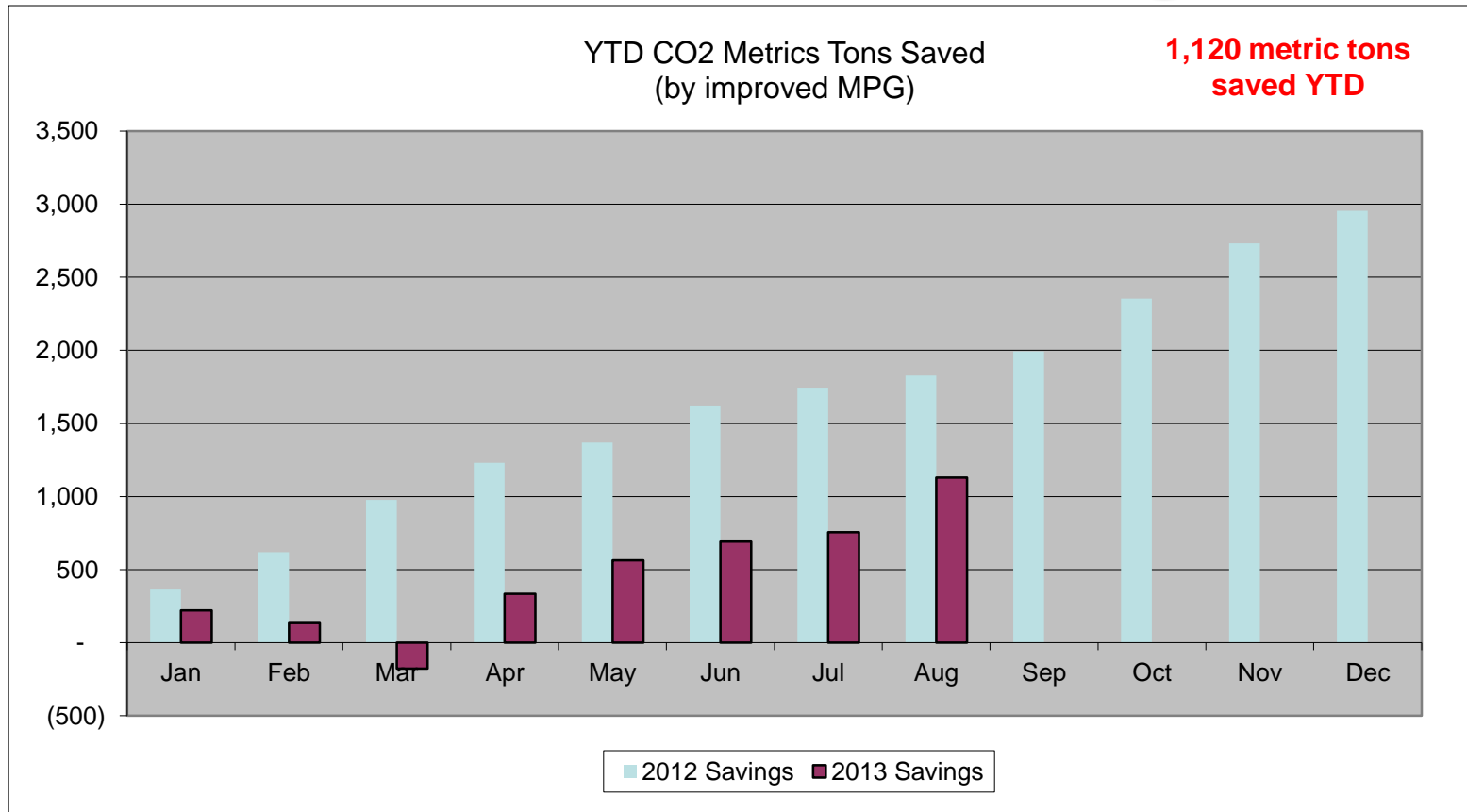
www.pittohio.com

Miles Per Gallon



PITT OHIO's fuel efficiency has improved by 7% since 2010.

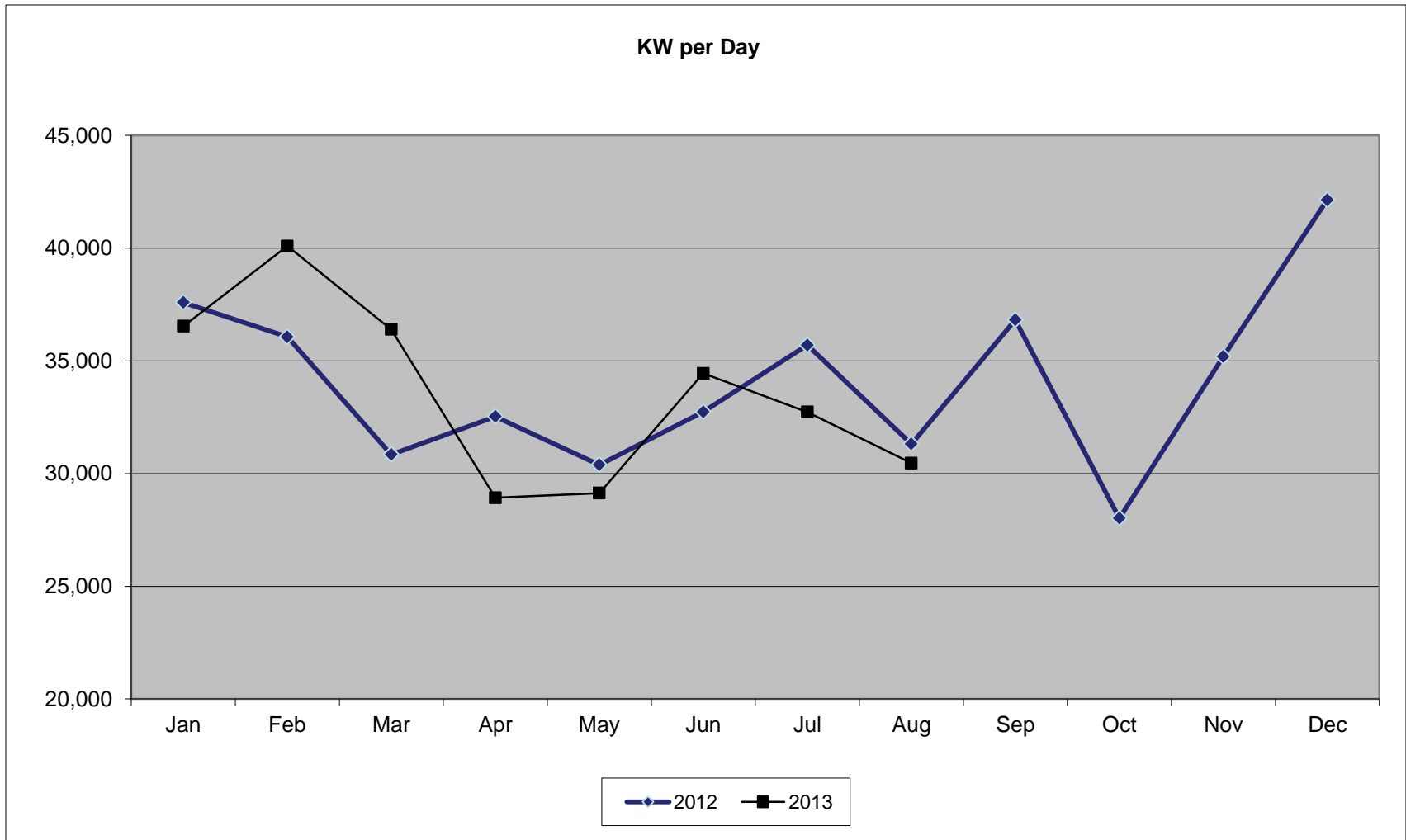
2013 Carbon Savings



Savings = (Improvement in MPG * Miles Driven) + Kilowatt Hours Saved

Facilities

Kilowatt Hours per Day



Buildings/Facilities

ANNUAL REDUCTION OF CO2 PRODUCTIONS (IN POUNDS):

ELECTRIC EFFICIENCY	Lighting	2,394,561
		502,920
		31,212
		60,030
	Appliances	25,020
		2,508
WATER EFFICIENCY		11,775
		37,700
		3,500
TOTAL CALCULATION		3,069,226 Pounds

3,069,226 Pounds



ESTIMATED TOTAL

1,535 Tons !!

How do we produce?

- We had a “host” partner
- They built and manage the system
- We benefit from net zero facility





Net Zero Micro Grid

Solar Installation

- 262/kw Ground Mounted Solar Generating Facility
- 1,092 Individual Sharp 240/Watt Solar Panels
- 25/Year Operation of this system will generate 6,5000,000/kwh of electricity
- One year of operation = reduction of 8,620/tons CO2 which is equal to saving 975,000/gallons of gasoline.



Can we improve on our solar project in Hamilton, NJ ?

Harmar PA Facility



Scheduled to open 2Q 2014

- Gold level LEEDs certified
- Bio-detention swales to maintain hydrology
- Focus on water retention with waterless urinals & low flow aerators
- Energy efficient LED light
- Geothermal heating & cooling

Pushing the Envelope

- Partnering with Pitt Swanson School of Engineering to Develop, Design, and Implement a pure Solar/DC current source for the company backup computer room.
- Monitor and verify energy savings at our new Harmar facility.
- Lab on site

Where do we go from here with renewable energy resources?

- If we can monitor and verify savings – the sky is the limit!
- If this works like we think – we will most likely move toward all LED lighting (it runs off pure DC power).